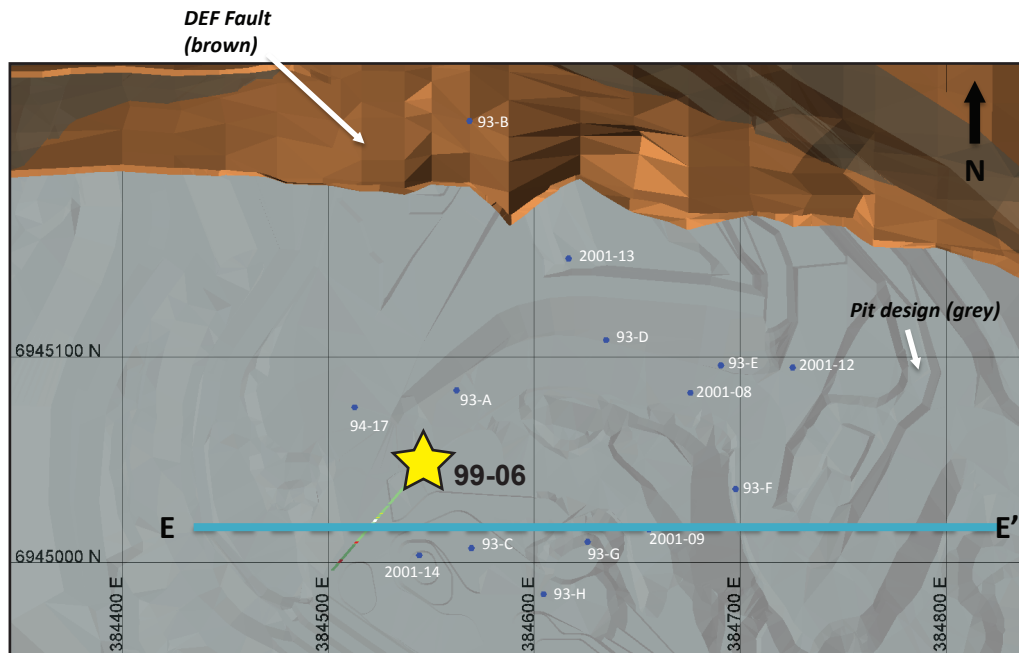


## Minto deposit (Yukon MINFILE 115I 021, 022)

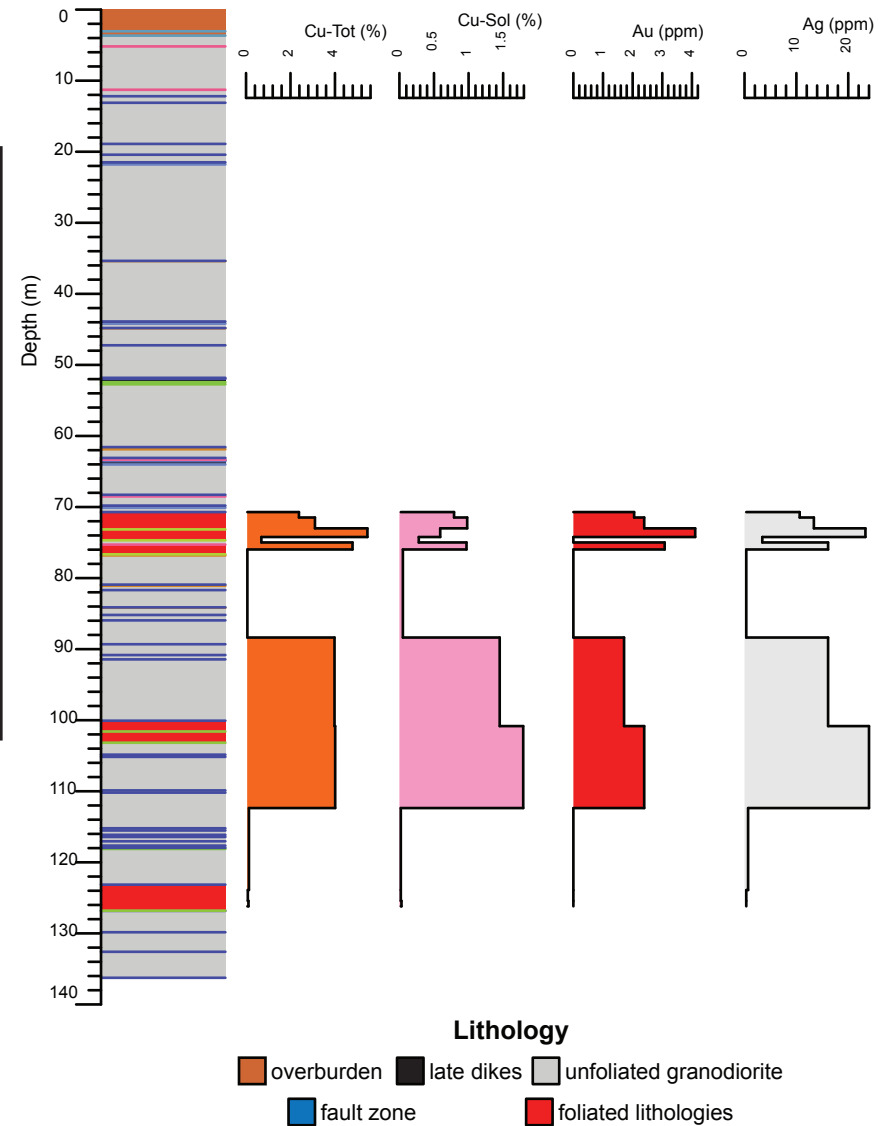
### Drill Hole: 99-06, Minto Main deposit

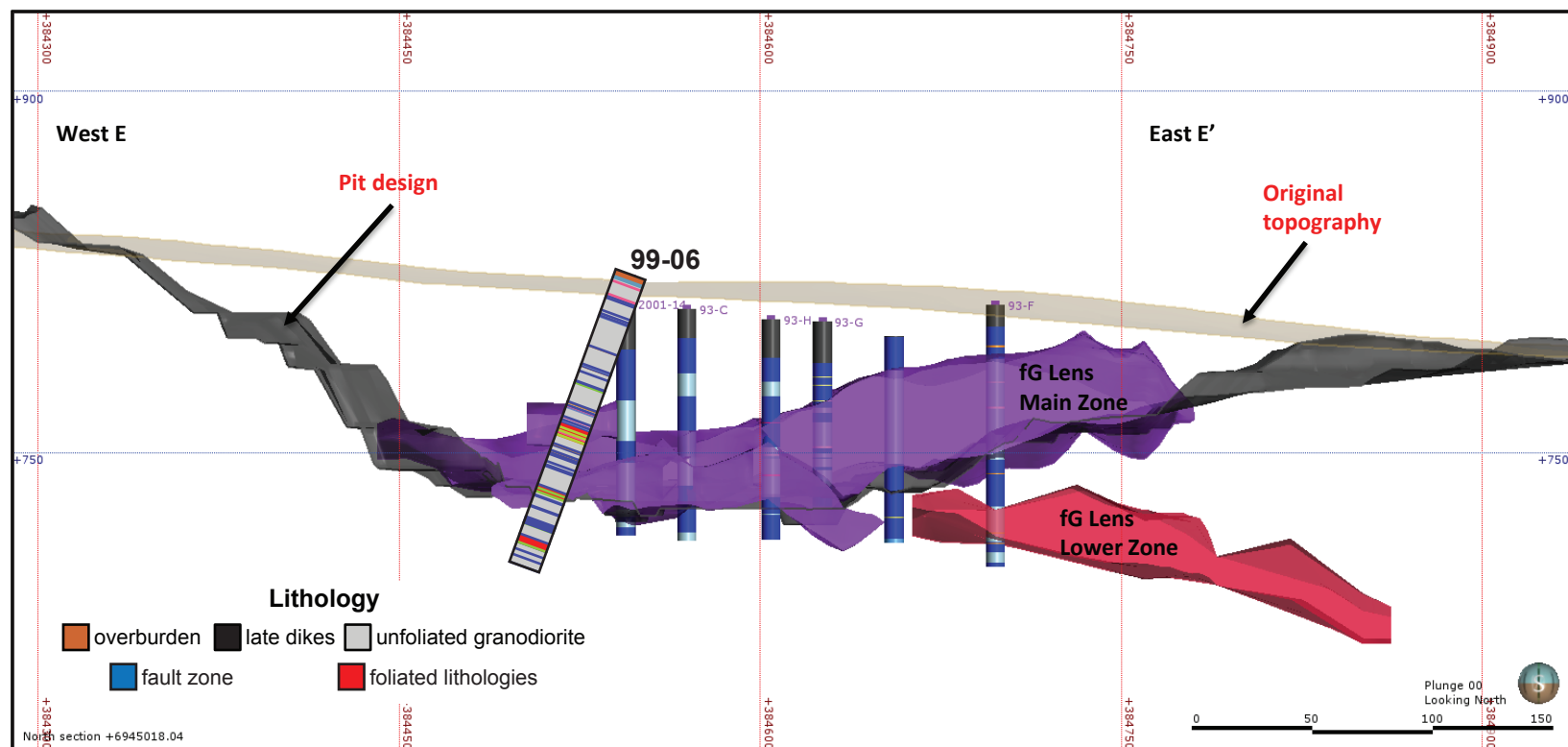
Area	Hole No.	Azimuth	Dip	Length (m)	Collar coordinates (NAD83, Zn 8)
Minto Main	99-06	221	-60	136.25	384546mE, 6945048mN



Above: Orthophoto of Minto area. Collar location of 99-06 shown by yellow star, blue circles show collar locations of other drill holes in YGS collection.

Right: Simplified strip log with selected assays.





Above: Simplified vertical east-west cross-section through the Minto Main pit.

Right: Selected assays through Minto Main lower zone. Cu - Tot = sulphide and non-sulphide copper, Cu-Sol = non-sulphide copper

Hole	From (m)	To (m)	Interval (m)	Sample	Cu (%)	Cu-Sol (%)	Au (ppm)	Ag (ppm)
99-06	70.71	72.24	1.53	21734	2.4	0.8	2.1	10.6
99-06	72.24	73.76	1.52	21735	3.1	1.0	2.4	13.4
99-06	73.76	74.68	0.92	21736	5.5	0.6	4.1	23.3
99-06	74.68	75.29	0.61	21737	0.7	0.3	0.0	3.4
99-06	75.29	76.66	1.37	21738	4.8	1.0	3.1	16.1
99-06	76.66	78.18	1.52	21739	0.1	0.1	0.0	0.3
99-06	100.07	101.59	1.52	21740	4.0	1.5	1.7	16.1
99-06	101.59	103.17	1.58	21604	4.0	1.8	2.4	24.0
99-06	123.14	124.66	1.52	21605	0.1	0.0	0.0	0.7
99-06	124.66	126.19	1.53	21606	0.1	0.0	0.0	0.3
99-06	126.19	126.8	0.61	21607	0.1	0.0	0.0	0.3